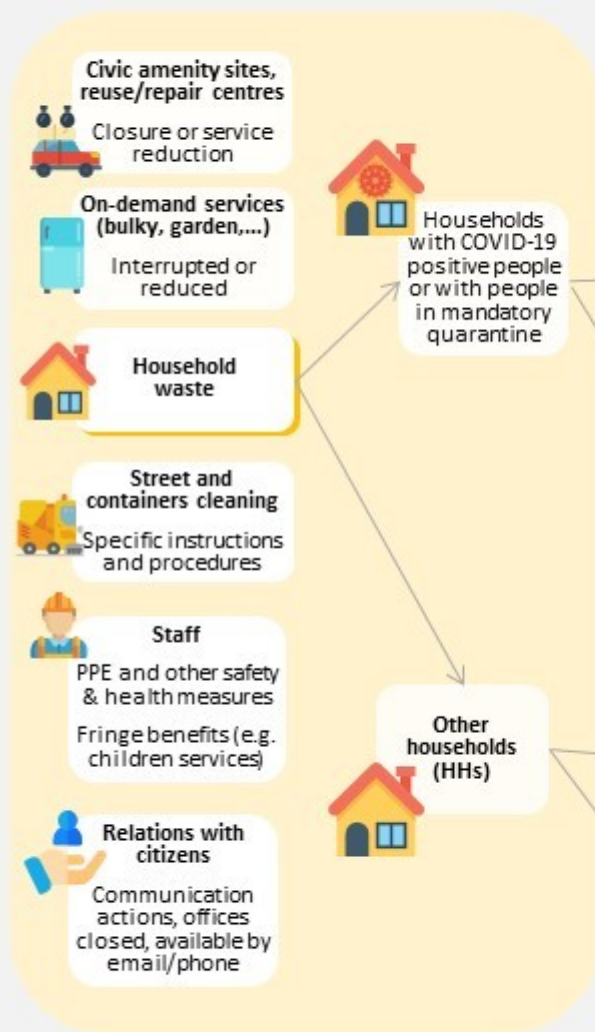


Municipal waste management and COVID-19 Summary of observed trends (March 2020)

GENERAL ADAPTATIONS TO MUNICIPAL WASTE SYSTEM



SORTING RULES AT HOME

Masks, gloves, tissues and disposable cloths collected with mixed waste (in some cases tissues and handkerchiefs were before collected with bio-waste)



Mixed waste

Bin with pedal, 2 or more sealed bags, recyclables and bio-waste with mixed waste



Recyclables, bio-waste

No source separation, households might be asked to keep at home for a certain amount of time WEEE, batteries, and other hazardous waste



Residual waste

Business as usual or 2 or more sealed bags



Recyclables, bio-waste

Business as usual, in case of temporary interruption of the service, households are invited to store at home dry recyclables



In some cases, 72 hours to wait before waste disposal

WASTE COLLECTION

Frequency collection modulated according to specific needs (staff shortages, health & safety measures reducing efficiency, mixed waste and bio-waste prioritization)



Mixed waste

Possibility of ad hoc services, keeping their waste separated from the municipal stream (specific containers)

Frequency of collection may need to be increased



Residual waste

Frequency of collection may need to be increased

During this period, the reporting for recycling targets might be modified according to the increase of mixed waste



Recyclables, bio-waste

Business as usual, even if the frequency of collection may need to be reduced

WASTE TREATMENT

Derogation to the mandatory preliminary mixed waste treatment before its disposal may be needed (either by way of incineration or controlled landfill)

Treatment plant must rely as much as possible on automated systems

Review of storage permits may be needed (to safely treat waste without infectious load)



Mixed waste

Incineration prioritised; MBTs continue with business as usual when they are highly automated (minimum involvement of operators), or controlled landfill



Residual waste

Business as usual, prioritising automated systems or preliminary storage



Recyclables, bio-waste

Business as usual, prioritising automated systems or preliminary storage

This graphic does not include recommendations or an exhaustive list but a reflection in terms of trends of what has been observed in the practices shared with ACR+

