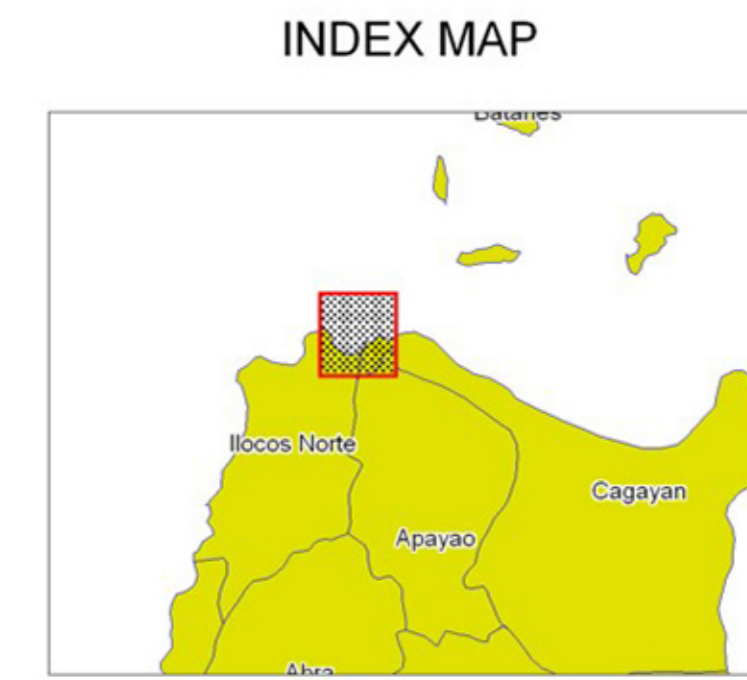
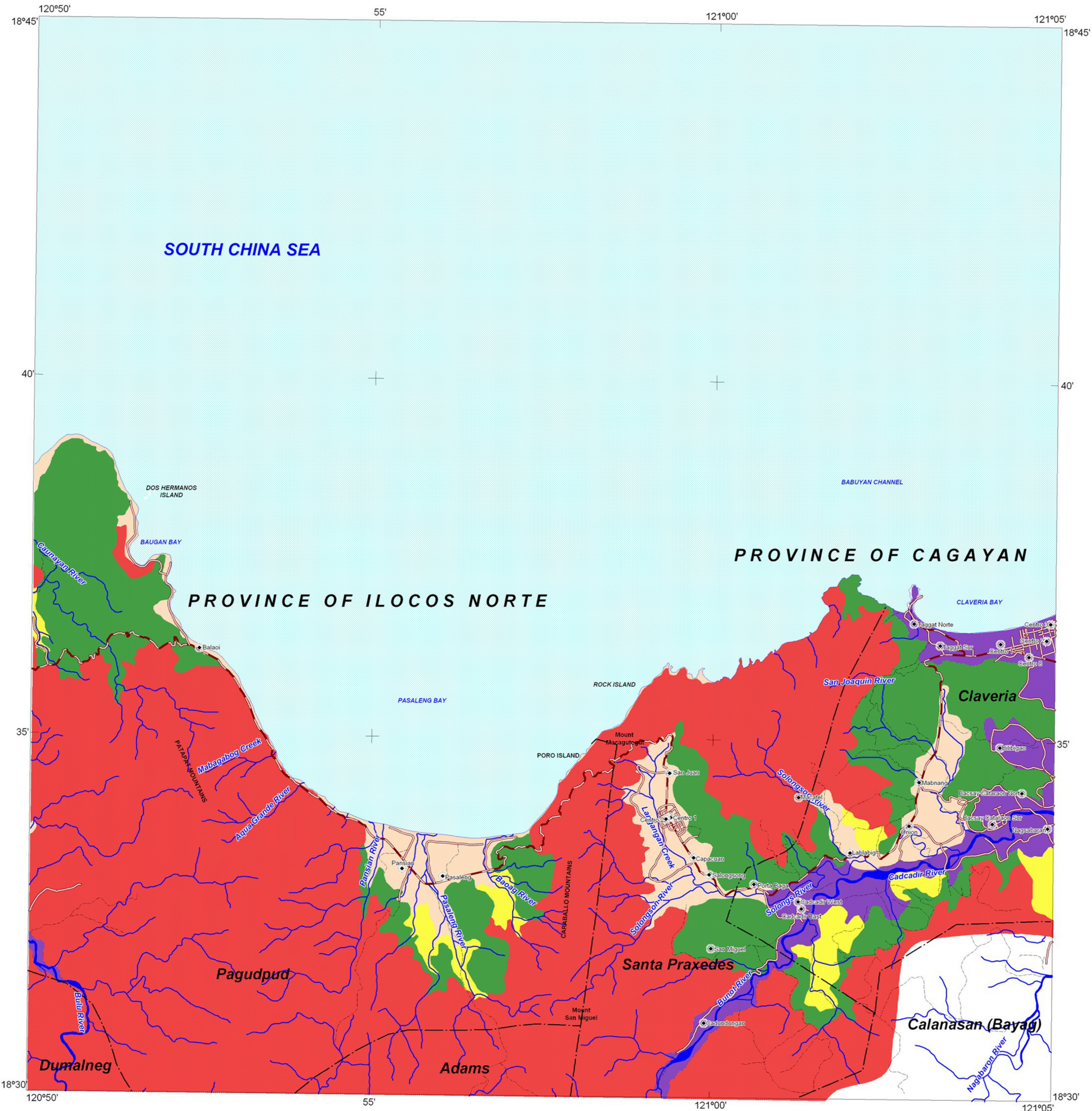
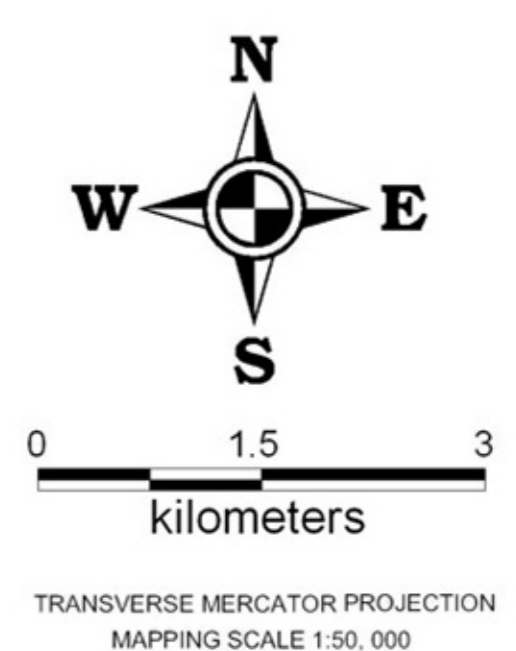


# LANDSLIDE AND FLOOD SUSCEPTIBILITY MAP OF CLAVERIA QUADRANGLE ILOCOS NORTE AND CAGAYAN PROVINCES, PHILIPPINES



**LEGEND :**

- **High susceptibility to landslide**  
Areas with high landslide susceptibility rating have active/recent landslides and tension cracks that would directly affect the community. Those with steep slopes and drainages that are prone to landslide damming are also highly susceptible to landslides.
- **Moderate susceptibility to landslide**  
Areas with moderate landslide susceptibility rating have inactive/old landslides and tension cracks which are located away from the community. These areas usually have moderate slopes.
- **Low susceptibility to landslide**  
Areas with low to gentle slopes and lacking tension cracks have low landslide susceptibility rating.
- **High susceptibility to flooding**  
Areas with greater than 1 meter flood height. These areas are usually flooded for several hours during heavy rains; include landforms of topographic lows such as active river channels, abandoned river channels and areas along river banks; also prone to flashfloods.
- **Low to moderate susceptibility to flooding**  
Areas with less than 1.0 meter flood height. These are usually inundated during prolonged and extensive heavy rainfall or extreme weather condition
- Roads
- River
- Municipal boundary
- Barangay center location



**GIS Processing :**  
Lands Geological Survey Division

**Data Sources:**  
MGB Geohazard Assessment Team  
Geological Database and Information Systems Section  
Lands Geological Survey Division  
Geosciences Division MGB RO I and II

**Base Map :**  
Sheet No. 7180 II "Claveria Quadrangle"

