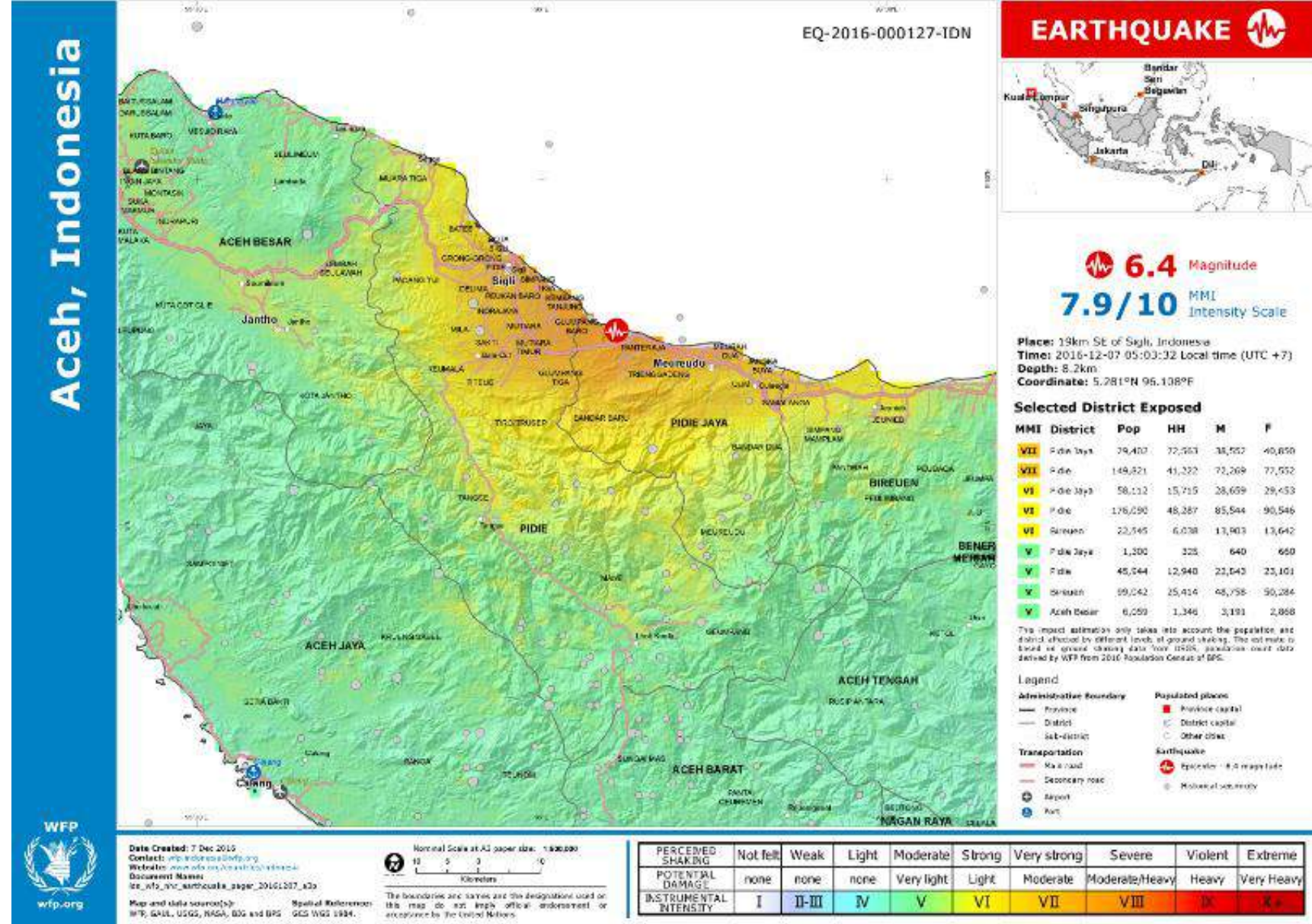


Findings from Pidie Jaya Response and Yogya Earthquake 10yrs on



Pidie Jaya

- 7th of December 2016 M6.4
- 2200 houses totally destroyed 4,500+ heavily damaged and 19,000+ mildly damaged
- National response
 - International agencies supporting remotely



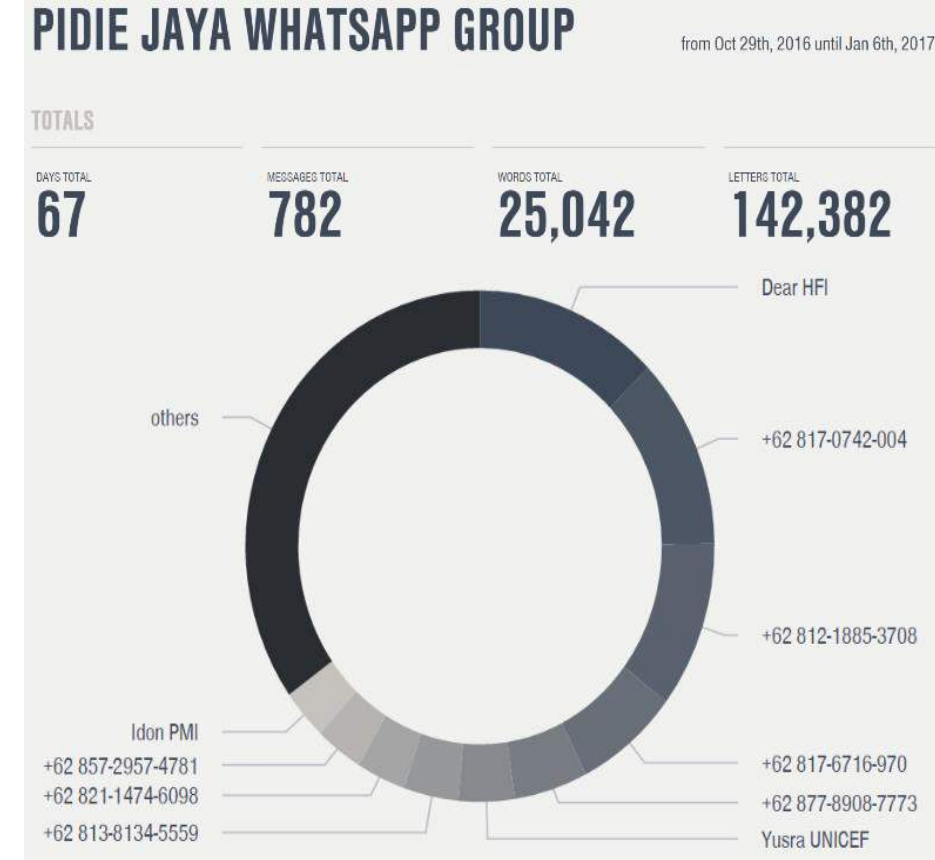
Observations

- All needs covered
 - Mainly due to elections
 - Coordination system still very weak
 - Political and religious agencies
 - Strong Gov and AHA response



Coordination

- All needs met
- No maps
- No 3w
- Run through whatsapp
- Lack of clarity on coordination roles and responsibilities
- Remaining needs
 - Multi tenancy structures
 - More vulnerable families in need of extra assistance

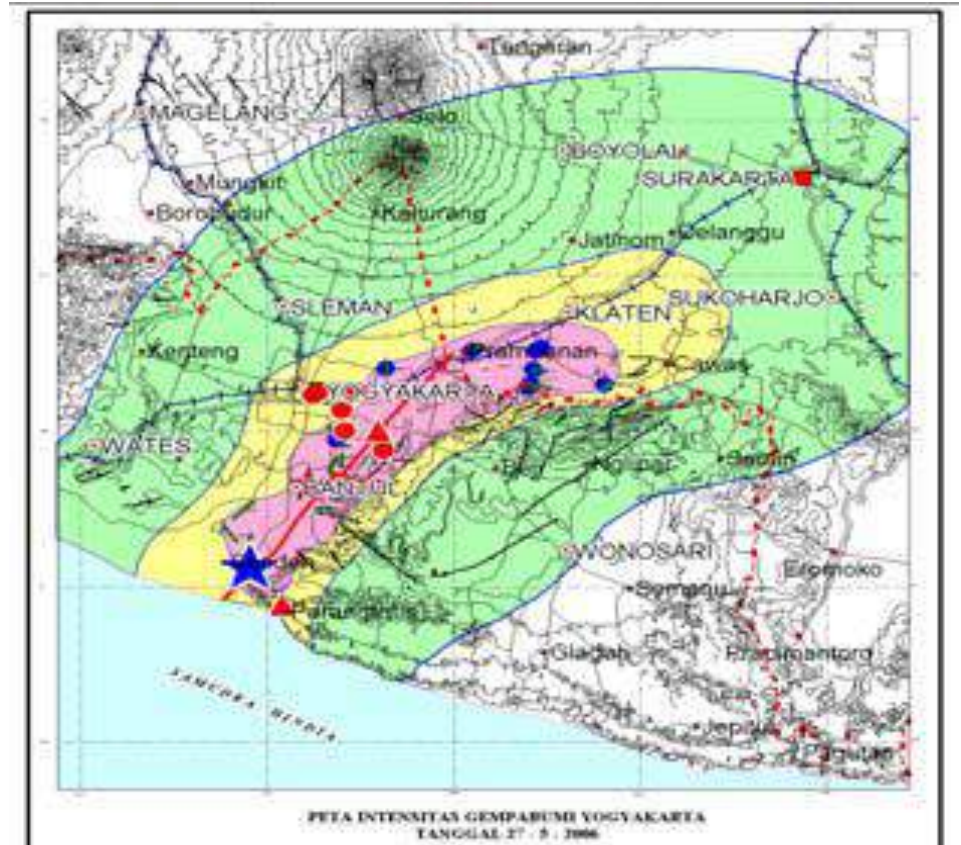


Quality of construction



Yogya quake

- 27th of May 2006 an M6.3 earthquake
- 5,700 people dead, 20,000+ injured
- 2-300,000 houses destroyed, similar number damaged
- 200 agencies providing more than 100 million dollars' worth of Emergency, Temporary and Permanent shelter assistance over the following two years
- First full launch of cluster system

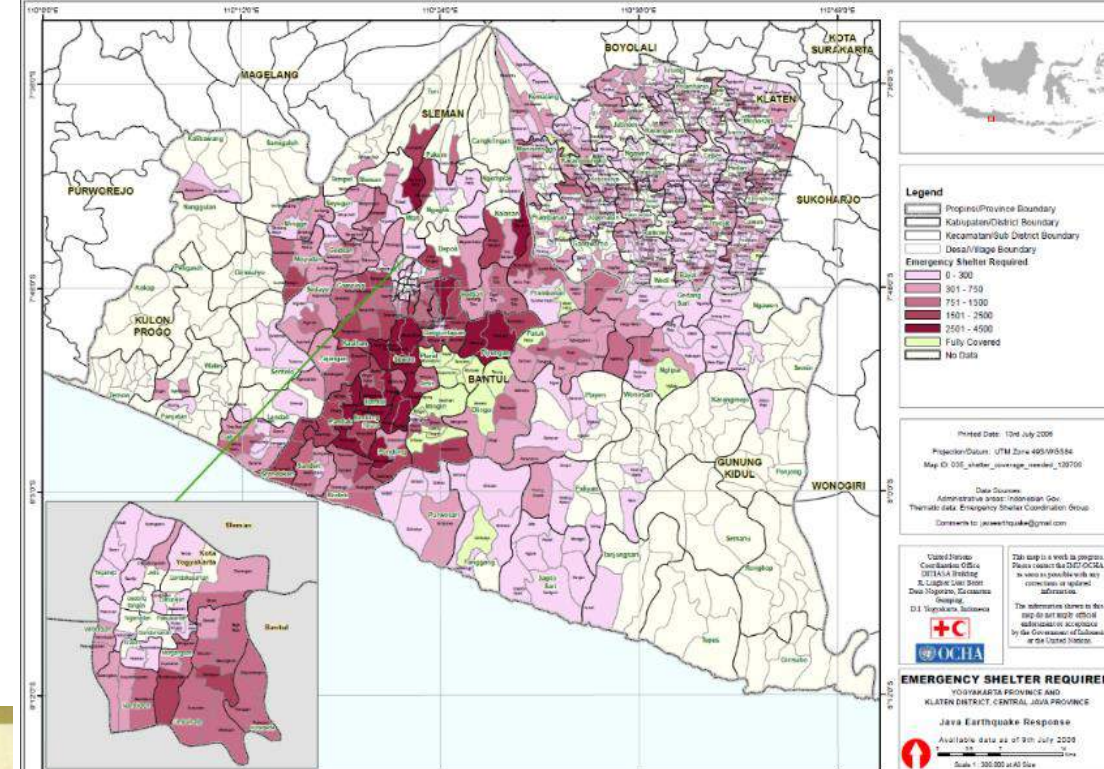


Casualties and Damages

	Died (people)	Injured (people)	Damages on Houses (units)		Damages on Public Facilities (units)		
			Heavy Damaged/ Demolished	Light Damaged	Mosque, Church, etc	Schools	Gov. Buildings
PROVINCE OF YOGYAKARTA	4.711	20.042	205.057	202.044	653	1.366	302
PROVINCE OF CENTRAL JAVA	1.063	18.526	99.730	104.111	-	108	1.003
TOTAL :	5.774	38.568	304.787	306.155	653	1.474	1.305

The response

- Emergency shelter: almost 100% cover
- Bridging Shelter
 - Copying community response with bamboo shelters
 - Core housing largely in Klaten
- DRR for permanent reconstruction



Few remaining signs of interventions

Remnant T-Shelter



Remnant Core House



Observations

- Cash
- Gotong Royong
- Klaten vs Yogya
- Recovery still ongoing
- Construction quality

Ongoing reconstruction



Quality of construction



Conclusions: its all about culture

- National coordination, is differently chaotic but as effective
- How do we get better at using existing social mechanisms, without damaging them
- What does preparedness and Risk Reduction mean to affected communities
- How do we get better at convincing people of their role in reducing their own risk through improved construction
 - Prioritising safety vs size and appearance